

# Hiroshima International School

## Annual Report 2019/2020

### **Our Vision**

HIS will provide an international education that promotes integrity, excellence, cultural sensitivity and a lifelong commitment to peace and a sustainable planet.

HISのビジョン: 誠実性、卓越性、異文化への感受性を育み、生涯にわたり平和で持続可能な地球への責任を果たす国際的な教育を行います。

### **Our Mission**

HIS will cultivate young people who are prepared for lifelong learning, meeting challenges and outstanding citizenship anywhere in the world.

HISの使命: 生涯を通じて学び挑戦をし続け、世界の一員として貢献する若者を育成します。

## Outline

The Annual Report provides a brief overview of the year, focused mainly on financial performance and updates on our School Improvement Plan. Details of our graduating class and any accreditation news is also included. For a more detailed account of the day-to-day operations of HIS, please refer to the weekly Crane newsletter on the HIS website.

## Boards of Directors & Trustees

We thank the members of the Board of Directors and Board of Trustees for their contributions over 2019/2020.

2019/2020 Board of Directors	2019/2020 Board of Trustees
<ol style="list-style-type: none"> <li>1. Peter Skaer (Director General)</li> <li>2. Guy Hird (Treasurer)</li> <li>3. Roger Reinoos</li> <li>4. Eric Grant</li> <li>5. Fuyuko Takita</li> <li>6. Ryoma Matsumoto</li> <li>7. Damian Rentoule</li> <li>8. Susan Meiki</li> </ol> <p><b>2019/2020 Auditors</b> (Appointed by Director General of Board of Directors with prior concurrence of Board of Trustees)</p> <ol style="list-style-type: none"> <li>1. Eisuke Tsuyama (Financial)</li> <li>2. Ron Klein (Facilities)</li> <li>3. Noriko Yamaguchi (Facilities)</li> </ol>	<ol style="list-style-type: none"> <li>1. Roger Reinoos (Chair from June 2018)</li> <li>2. Hiroshi Yoshikawa</li> <li>3. Peter Skaer</li> <li>4. Yukiko Erikson</li> <li>5. Fuyuko Takita</li> <li>6. Kimiyoshi Nishimura</li> <li>7. Eric Grant</li> <li>8. Masayuki Kagemoto</li> <li>9. Yasuo Onari</li> <li>10. Matthew Jungblut</li> <li>11. Tyler Montgomery</li> <li>12. Kelly Rose</li> <li>13. Gerardo Gambirasio</li> <li>14. Chris Clark</li> <li>15. Barry Ngo</li> <li>16. Hugues Garcia</li> <li>17. Takako Tokunaga</li> <li>18. Mika Kiriake</li> <li>19. Annie Levasseur</li> <li>20. Salie karen</li> </ol>

## The Parent/Teacher Association (PTA)

The Parent/Teacher Association has continued to support HIS with a range of successful community-based activities during 2019/2020. We would like to thank all of the parents who contributed to the wonderful PTA activities during the year.

In 2019/2020, we did not have a formal PTA Committee. During the first part of the year, a range of PTA activities were led by volunteers following the schedule of activities from the previous year. Once the COVID pandemic took hold in the second half of the year, most of our major PTA events were either postponed or modified or run on very small scales. We would like to thank the range of parent volunteers who continued to contribute their time so generously during the year. Thank you also to the parents who made plans for the PTA committee to re-convene in 2020/2021.

## New Building Construction

The construction company, Hebel Haus, was confirmed, along with the design and finances for construction of the new building to replace the Annex. Construction started in July 2020 and at the end of the 2019/2020 school year, all classes moved into the main school building for the duration of the construction period. The expected date of completion is April 2021.

## Fundraising Campaign

We would like to express our appreciation to our donors who kindly support learning at HIS. As a school funded almost entirely from tuition revenue, these generous financial contributions allow us to make direct impacts on our educational program and the day-to-day experiences of our students. During 2019/2020 an approach to recognizing donors through named plaques on the school walls was considered and an approach will be confirmed in 2020/2021 before the construction project is completed.

## Our Teachers and Staff

Thank you to all of our teachers and staff who supported the learning at HIS during 2019/2020;

We farewell:

- Annie Levasseur
- Justine Lancon
- Guy Dormer
- Katherine Imabayashi

We would also like to congratulate the following teachers who continue to support the International Baccalaureate (IB) in their various roles with the IB Educator Network:

- Takako Tokunaga – DP Workshop Leader
- Mika Kiriake – DP Workshop Leader
- Ayako Kurokawa – DP Workshop Leader, DP Examiner, DP School Visit Team Member, DP Visual Arts and CAS Guide Translation Moderator
- Nigel Barker – DP Senior Examiner
- Annie Levasseur – DP Examiner
- Damian Rentoule – MYP/Continuum Workshop Leader, MYP/DP Program Field Representative
- Marybeth Kamibeppu - MYP Workshop Leader
- Yumi Kyogoku - PYP Workshop Leader

## Curriculum Evaluation and School Accreditation

In 2019/2020, HIS undertook a full-year combined Council of International Schools (CIS) and International Baccalaureate (IB) self study. The IB self-study Primary Years Program, self-study during the 2019/2020 school year examining all aspects of school life. The evaluation and accreditation process is on a five-year cycle as part of our ongoing quality assurance.

## The COVID Pandemic

The COVID pandemic affected school life in numerous ways including a 3-week period of distance learning. Many events were cancelled or held in alternate formats during the pandemic. One of the cancellations was the IB Diploma Program May exam session. A series of health regulations were published and the school community is to be congratulated on the positive response to the changes in school routines despite the length of the pandemic. We were very pleased to be able to maintain on-campus classes throughout most of the year.

## Farewell to the Class of 2020

Congratulations to the Class of 2020 who had a very successful year despite some challenges due to the disruptions caused by the COVID situation which involved much uncertainty, a period of distance learning and the cancelation of the Diploma Program exams. This class demonstrated commitment, independence and resilience in the face of these challenges right to the very end of a difficult year.



## **United States**

Bryant University

Butler University

Emory University

Oberlin College

Parsons School of Design, The New School

Pratt Institute

Rensselaer Polytechnic Institute

Ringling College of Art and Design

Seton Hall University

University of California, Berkeley

University of California, Davis

University of Michigan

University of Wisconsin-Madison

## **Japan**

Hiroshima University

Hiroshima Jogakuin University  
 International Christian University  
 Keio University (Global Information and Governance Academic program)  
 Okayama University (Global Discovery Program)  
 Okayama University (Department of Nursing)  
 Ritsumeikan Asia Pacific University  
 Ritsumeikan University  
 Sophia University  
 The University of Tokyo (The Programs in English at Komaba)  
 Tokyo College of Music  
 Waseda University

## School Finances

After last year's healthy surplus, we saw a downturn in enrolments in the second half of the year due to the emergence of the Coronavirus in January 2020.

### REVENUE

Section	Budget	Actual	Actual vs. Budget	Actual / Budget
5100 - Income - Corporate	12,758,930	20,060,021	7,301,091	157%
5200 - Income - Private	235,148,814	221,507,633	(13,641,181)	94%
5300 - Day school - Bus / Camp	20,911,800	23,247,812	2,336,012	111%
5400 - Misc Income	7,117,033	8,409,580	1,292,547	118%
5700 - English Language Program	17,510,000	14,491,650	(3,018,350)	83%
5800 - Japanese Language Program	464,000	1,574,290	1,110,290	339%
<b>Total</b>	<b>293,910,577</b>	<b>289,290,986</b>	<b>(4,619,591)</b>	<b>98%</b>

**EXPENSE**

<b>Section</b>	<b>Budget</b>	<b>Actual</b>	<b>Actual vs. Budget</b>	<b>Forecast / Budget</b>
6000 - DAY Staff Expenses	196,165,000	193,040,584	3,124,416	98%
7000 - DAY Administration Expenses	76,712,927	77,556,249	(843,322)	101%
8000 - DAY Instructional Expenses	11,143,000	7,585,203	3,557,797	68%
6700 - ELP Staff Expenses	7,914,000	7,474,071	439,929	94%
7700 - ELP Administration Expenses	1,048,000	966,557	81,443	92%
8700 - ELP Instructional Expenses	245,000	207,519	37,481	85%
6800 - JLP Staff Expenses	227,000	663,997	(436,997)	293%
7800 - JLP Administration Expenses	17,184	69,510	(52,326)	405%
8800 - JLP Instructional Expenses	0	0	0	-
<b>Total</b>	<b>293,472,111</b>	<b>287,563,690</b>	<b>5,908,421</b>	<b>98%</b>

**NET INCOME(LOSS)**

<b>Section</b>	<b>Budget</b>	<b>Actual</b>	<b>Actual vs. Budget</b>	<b>Actual / Budget</b>
Total income	293,910,577	289,290,986	(4,619,591)	98%
Total expenses	293,472,111	287,563,690	5,908,421	99%
<b>Total</b>	<b>438,466</b>	<b>1,727,296</b>	<b>1,288,830</b>	<b>-</b>

## 2019/2020 Balance Sheet

	<b>Beginning Balance</b>	<b>Debit</b>	<b>Credit</b>	<b>Ending Balance</b>
	<b>1st August 2019</b>	<b>+</b>	<b>-</b>	<b>31st July 2020</b>
Total: Cash & Bank Account	294,570,879	749,681,920	698,864,776	345,388,023
Total: Receivables	3,740,348	313,862,053	313,328,151	4,274,250
Total: Other Current Assets	7,137,644	23,238,157	23,294,046	7,081,755
<b>Total: Current Assets</b>	<b>305,448,871</b>	<b>1,086,782,130</b>	<b>1,035,486,973</b>	<b>356,744,028</b>
Total: Tangible Fixed Assets	624,906,149	85,711,931	45,034,221	665,583,859
Total: Intangible Fixed Assets	635,208	0	0	635,208
Total: Investment	3,093,000	0	285,000	2,808,000
<b>Total: Fixed Assets</b>	<b>628,634,357</b>	<b>85,711,931</b>	<b>45,319,221</b>	<b>669,027,067</b>
<b>Total: Assets</b>	<b>934,083,228</b>	<b>1,172,494,061</b>	<b>1,080,806,194</b>	<b>1,025,771,095</b>
	<b>Beginning Balance</b>	<b>Debit</b>	<b>Credit</b>	<b>Ending Balance</b>
	<b>1st August 2019</b>	<b>-</b>	<b>+</b>	<b>31st July 2020</b>
Total: Current Liabilities	81,637,306	334,544,969	309,007,540	56,099,877
Total: Fixed Liabilities	25,488,000	10,166,000	125,664,000	140,986,000
<b>Total: Liabilities</b>	<b>107,125,306</b>	<b>344,710,969</b>	<b>434,671,540</b>	<b>197,085,877</b>
Total: Capital	826,957,922	0	1,727,296	828,685,218
<b>Total: Liabilities &amp; Capital</b>	<b>934,083,228</b>	<b>344,710,969</b>	<b>436,398,836</b>	<b>1,025,771,095</b>

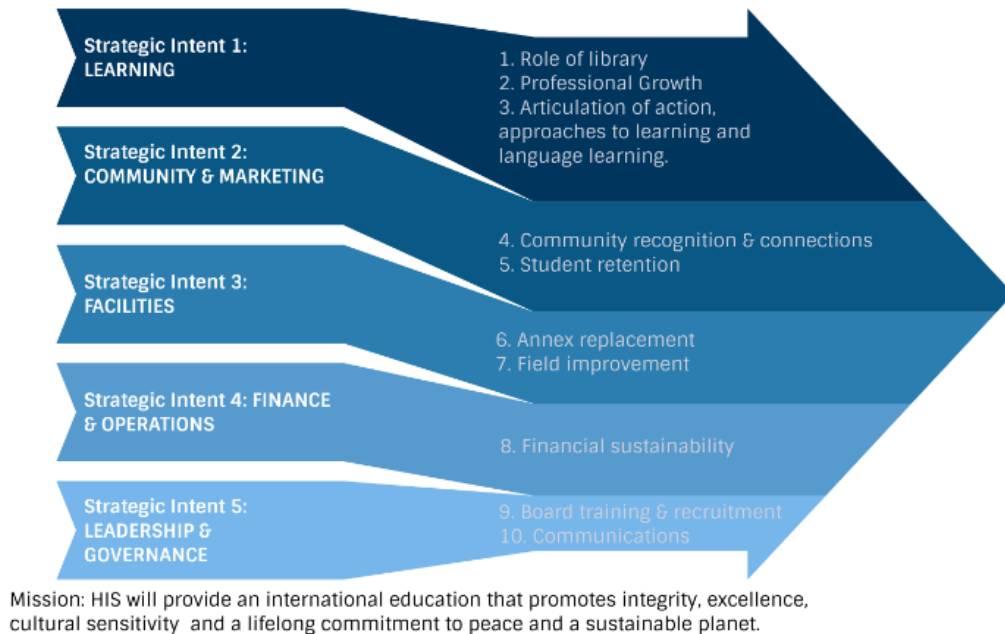
## HIS School Improvement Plan

The following five strategic intents have been identified at HIS with sets of objectives. Please find below, some notes regarding action on each specific objective during 2019/2020..



# HIS School Improvement Plan

2018-2023



## Strategic Intent 1: Learning

1. A full-year combined Council of International Schools (CIS) and International Baccalaureate (IB) self study dominated 2019/2020. The outcome of this process is an evaluation visit early in 2020/2021 which will result in a series of recommendations based on the standards and practices of each organization. These will form the basis of the whole-school HIS Improvement Plan as well as the IB program-based action plans.

## Strategic Intent 2: Community and Marketing

2. With drops in student numbers and a school closure during the latter part of the academic year, marketing will continue to be crucial in 2020/2021.

## Strategic Intent 3: Facilities

3. Hebel Haus was contracted to construct the new building to replace the Annex. Construction started in July 2020.
4. After the construction is complete, repacking the field with the same clay-based material is considered the most cost-effective method for the field improvement and will be considered in 2020/2021.

## Strategic Intent 4: Finance and Operations

5. Current staffing levels, enrollment numbers and tuition levels are working to create only a small surplus in 2019/2020 due to a downturn in enrolments. Enrollments

**Strategic Intent 5: Leadership and Governance**

6. The Board of Directors continues to consider approaches to the ongoing training of the Board members in both the Board of Directors and the Board of Trustees.